

Composers note: The accompaniment for this piece is derived from harmonic suggestions arising from the notated double bass part. The harmony is thus not set, but is rather whatever the accompanist hears and improvises. The double bass part starts at a comfortable dynamic which can be adjusted to suit the improvised accompaniment. Suggested tempo is as marked.

# Route 666

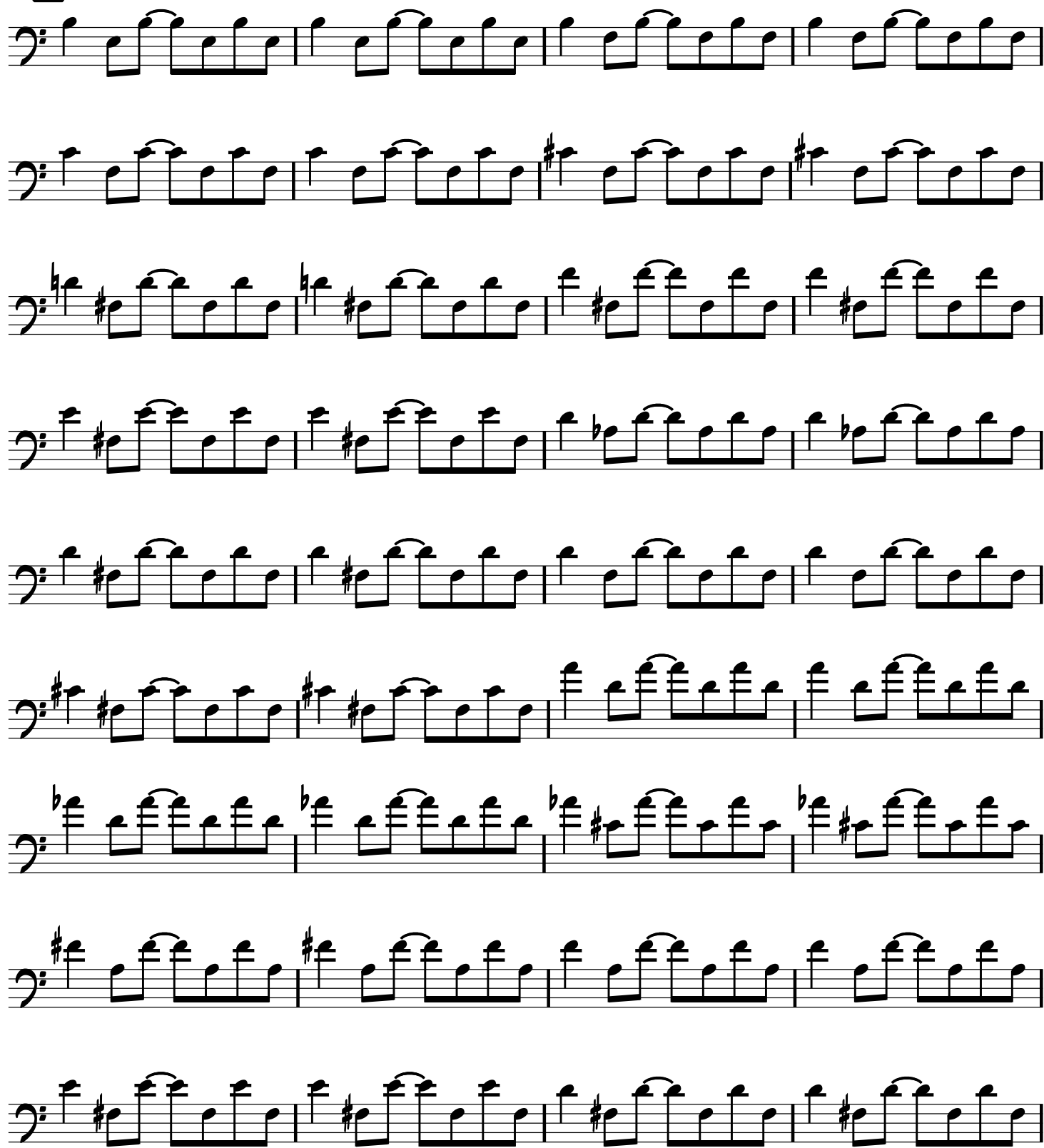
Double Bass

**A** ♩ = 126

*For double bass and accompaniment*

Barney McAll

*very steady*

**B****C**

